

**B600 Series  
AW-PG70  
3 1/4" Frame Depth  
Casement (Project-Out)**

## B600 SERIES CASEMENT (PROJECT-OUT)

The Quaker B600 Casement window is specially glazed specifically designed to meet ASTM F1642-04 (Standard Test Method for Glazing and Glazing System Subject to Airblast Loadings) resulting in a high GSA/ISC Performance Condition.

### FEATURES

- ◇ Commercial Framing System
  - 3 1/4" main frame
  - Sealable corner keys
  - Crimp/Screw connections
  - 0.094" wall thickness of interior and exterior walls, 0.070" wall thickness elsewhere
- ◇ Enhanced Design
  - Azo-braided channel receives Azon pour and debridge thermal break which is 1/2" wide in all main frame and vent rail extrusions
  - Clean squared edges
  - 3" narrow sitelines
- ◇ With or Without Integral Nailing Fin
- ◇ Glazing
  - 1" insulated glass
- ◇ Hardware
  - Heavy-commercial Truth Contour™ locking system (Crank-out only)
  - Low profile cam handle (Push-out only)
  - Crank-out available (4-Bar hinges or butt hinges)
  - Push-out available (4-Bar hinges)
- ◇ Screen
  - Standard screens (Crank-out only)
- ◇ Meets ADA Requirements (ADA Handle Required, Crank-out only)

### OPTIONS

- ◇ Available Configurations
  - Project-out Casement
  - Push-out or Crank-out (Left or Right)
  - Wire frame capabilities
- ◇ Muntin Choices
  - Internal or simulated divided lites available
- ◇ Limited travel hardware
- ◇ Glazing
  - Multiple Low-E and argon glazing choices
  - Triple glazing (Energy TG)
  - Capillary tubes
  - Wide variety of glazing, tinting and thickness options
- ◇ Panning & Trim Choices
  - Wide variety of panning, receptor and trim available
- ◇ Mulling
  - Wide variety of structural mulls

### BENEFITS

- ◇ The capacity to match exterior colors for unique project facades
- ◇ The ability to facilitate large sizes for taller and wider window openings
- ◇ Modern appearance merged with superior structural integrity

### PERFORMANCE

- ◇ Structural & Thermal

Model	Casement (Project-Out)	
Test Sizes	48" x 84" (crank out)	36" x 96" (push out)
NAFS Rating	AW-PG70-C	
Structural Load P.S.F.	105.26	
Air at 50 MPH (cfm/ft <sup>2</sup> )	<0.10	
Water (No Penetration) P.S.F.	12.11	
CR (Condensation Resistance)	45-48	
U-Value (ranges based on multiple Low-E/Argon combinations)	0.32-0.44	
SHGC (ranges based on multiple Low-E/Argon combinations)	0.11-0.45	

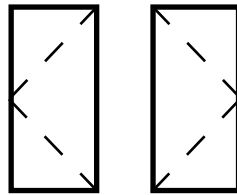
Operating Force: 6 lbf (maintain motion),  
8 lbf (latches), 3 lbf (ADA Handle)

Thermal values shown are a range based on Quaker's most popular glass package options. Other available glass options may result in scores outside of the range shown.

- ◇ Blast: Blast Calculations Available for Project Specific Conditions

Our products are tested to the standards of and certified by some of the foremost organizations in the fenestration industry.



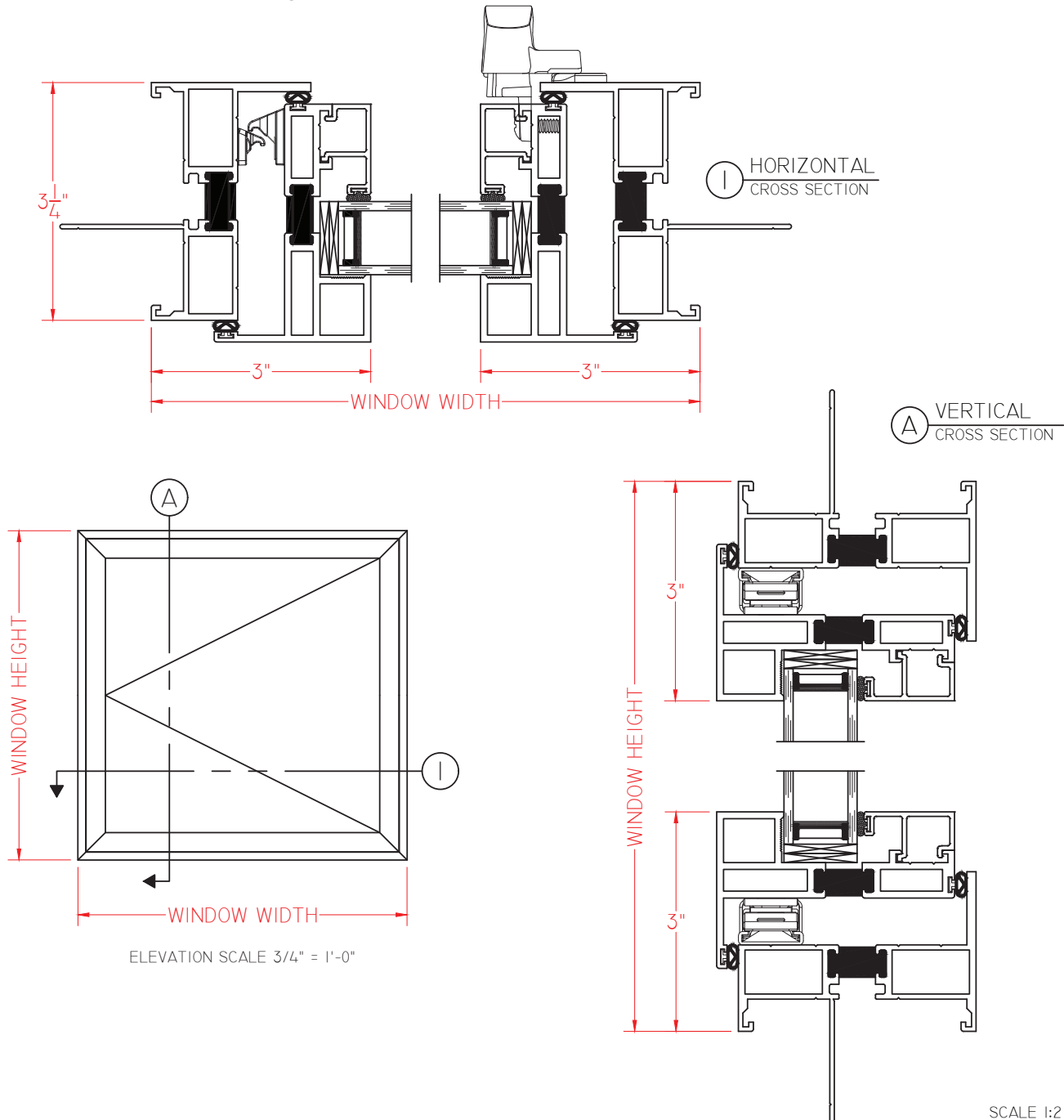


**B600 Series  
AW-PG70  
3 1/4" Frame Depth  
Casement (Project-Out)**

**B600 SERIES CASEMENT (PROJECT-OUT) PUSH OUT**

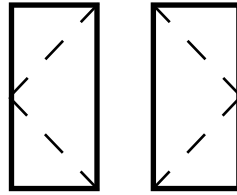
Shown With Nailing Fin

This document contains confidential and proprietary information intended for the private use of Quaker.  
© 2016 Quaker Window Products Co., INC. All rights reserved.  
Quaker reserves the right to change any/all designs without notice. Due to periodic re-certification requirements, result shown may vary.



Our products are tested to the standards of and certified by some of the foremost organizations in the fenestration industry.



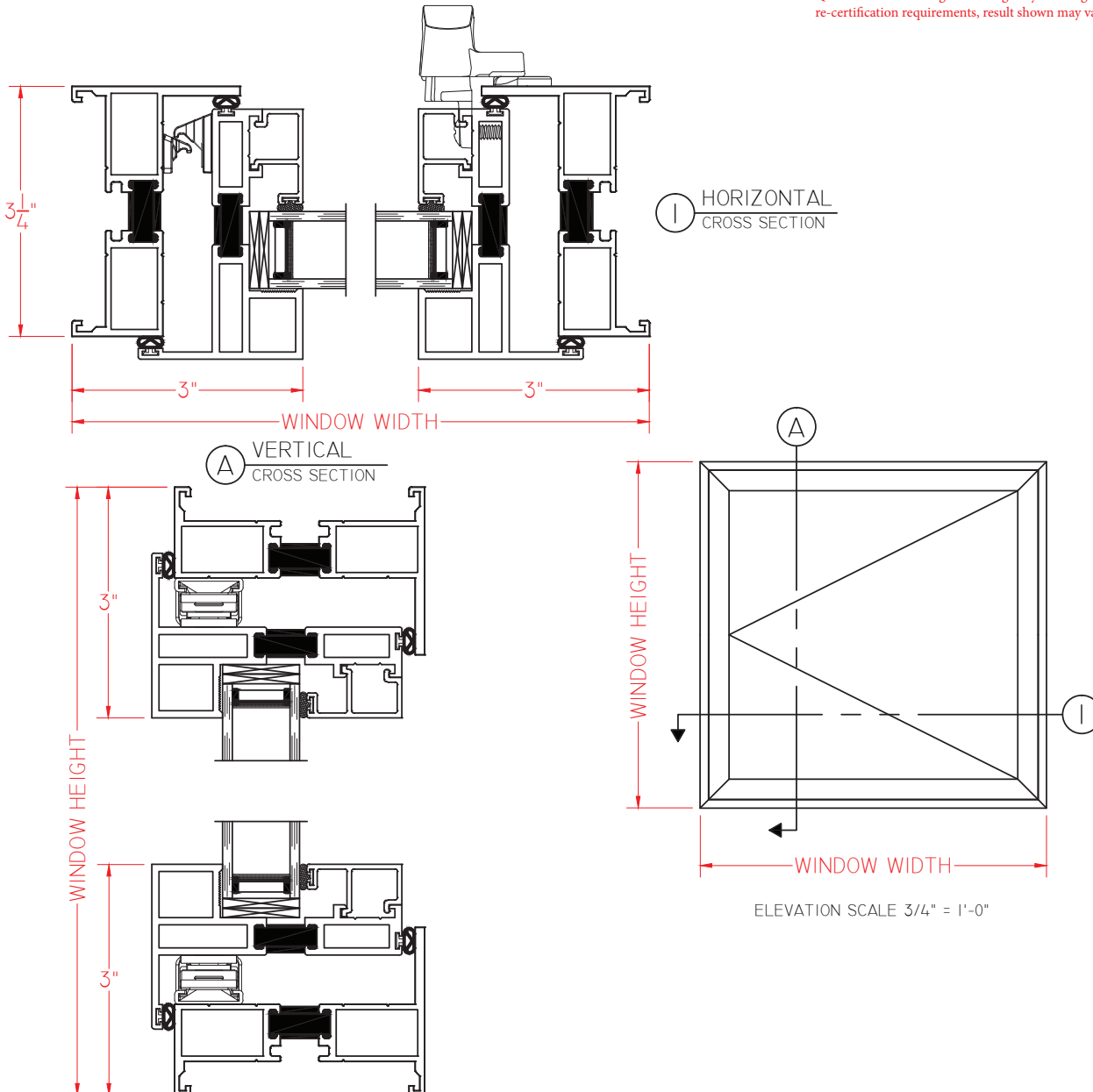


**B600 Series  
AW-PG70  
3 1/4" Frame Depth  
Casement (Project-Out)**

**B600 SERIES CASEMENT (PROJECT-OUT) PUSH OUT**

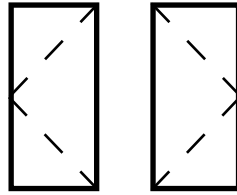
Shown With No Nailing Fins

This document contains confidential and proprietary information intended for the private use of Quaker.  
© 2016 Quaker Window Products Co., INC. All rights reserved.  
Quaker reserves the right to change any/all designs without notice. Due to periodic re-certification requirements, result shown may vary.



Our products are tested to the standards of and certified by some of the foremost organizations in the fenestration industry.



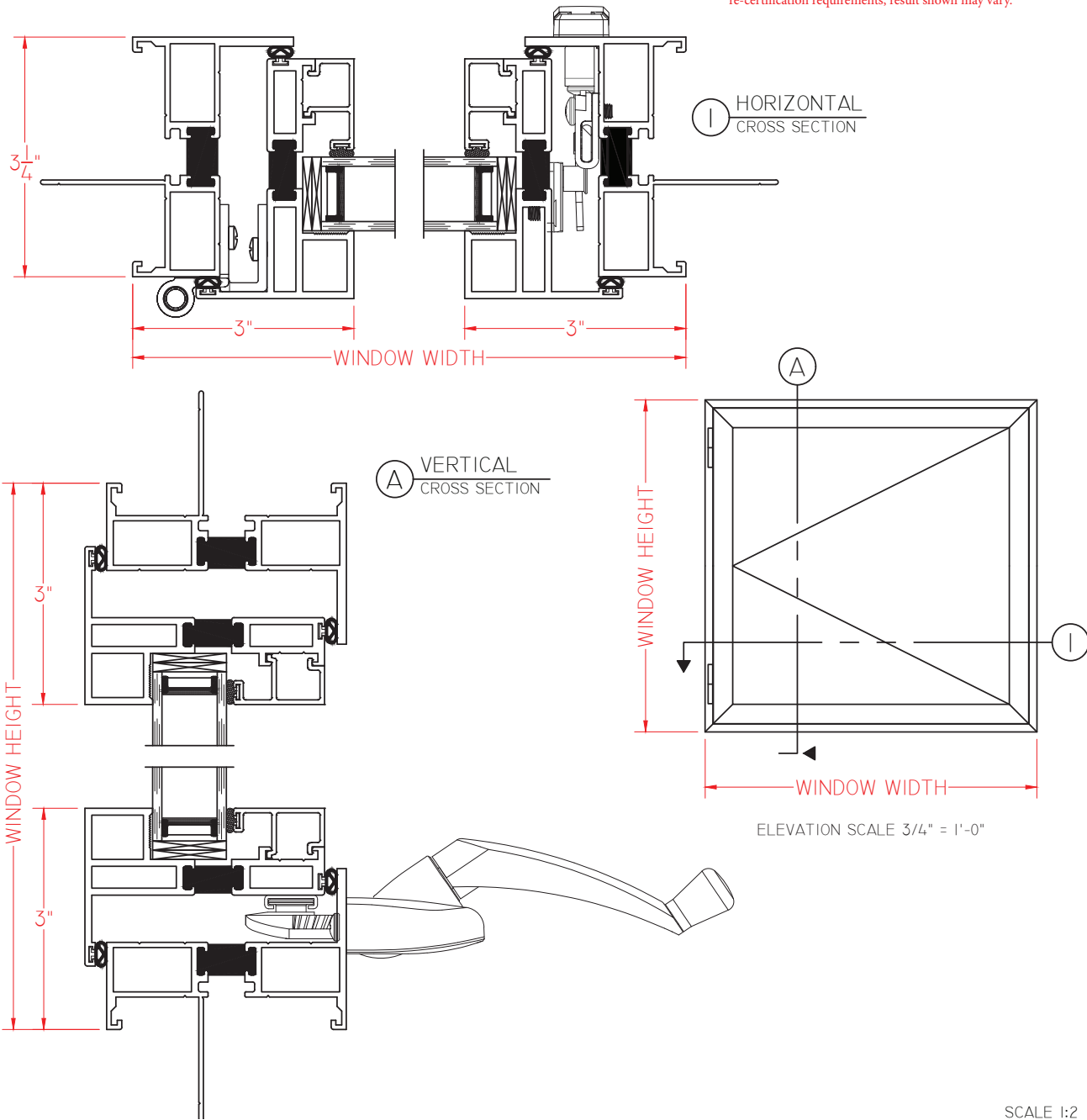


**B600 Series  
AW-PG70  
3 1/4" Frame Depth  
Casement (Project-Out)**

**B600 SERIES CASEMENT (PROJECT-OUT) CRANK OUT**

Shown With Nailing Fins

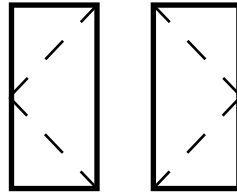
This document contains confidential and proprietary information intended for the private use of Quaker.  
© 2016 Quaker Window Products Co., INC. All rights reserved.  
Quaker reserves the right to change any/all designs without notice. Due to periodic re-certification requirements, result shown may vary.



SCALE 1:2

Our products are tested to the standards of and certified by some of the foremost organizations in the fenestration industry.



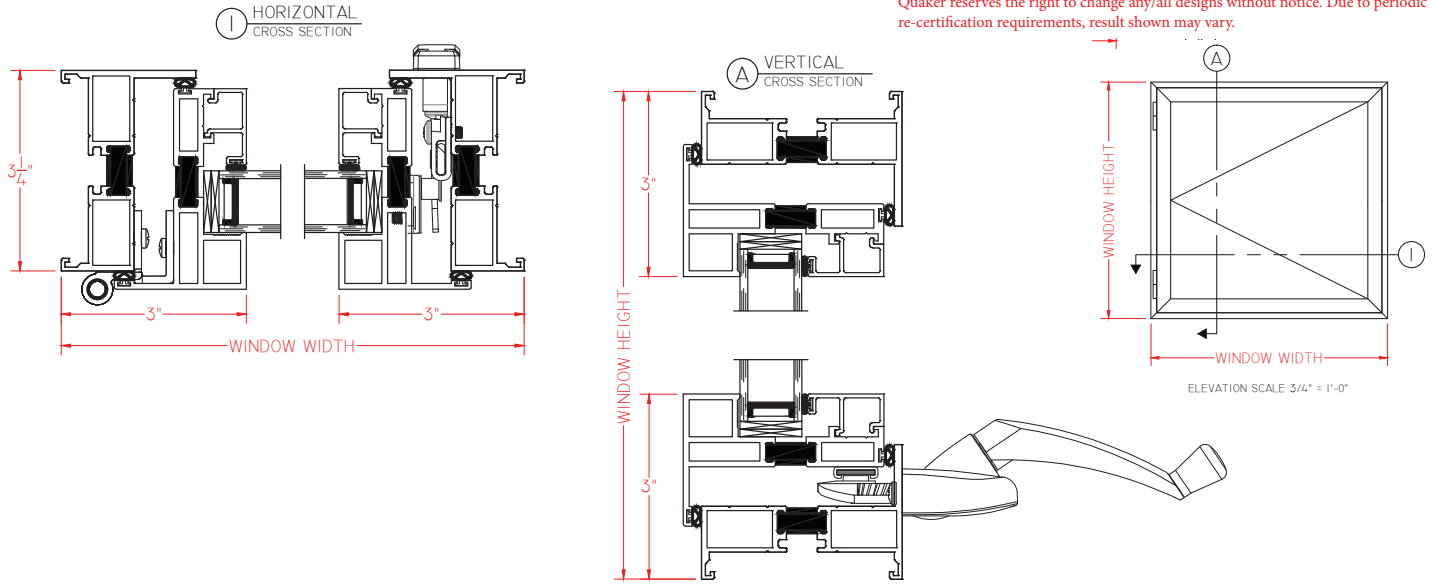


**B600 Series  
AW-PG70  
3 1/4" Frame Depth  
Casement (Project-Out)**

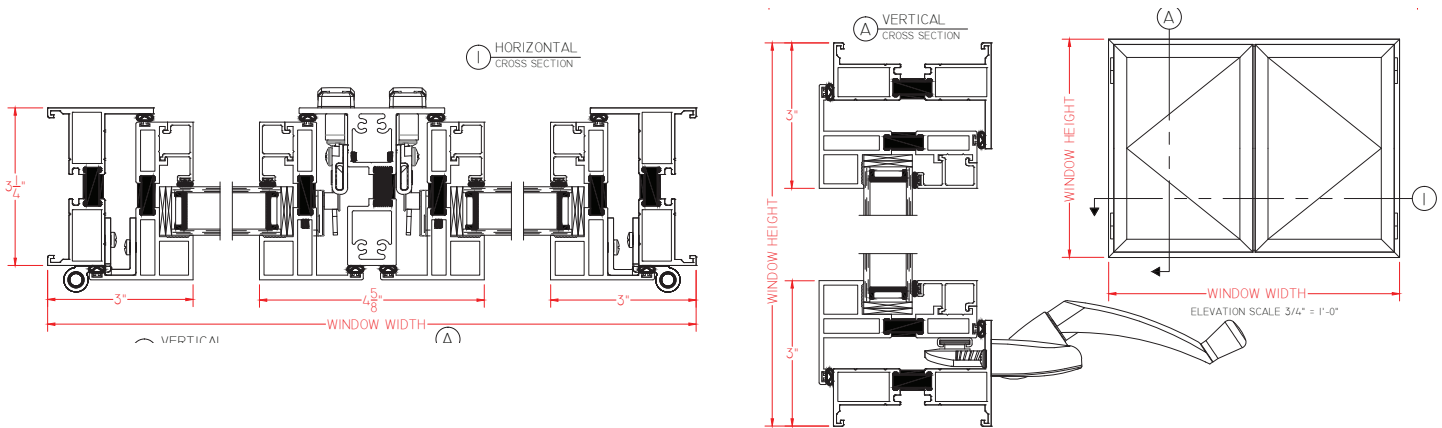
**B600 SERIES CASEMENT (PROJECT-OUT) CRANK OUT**

Shown With No Nailing Fins

This document contains confidential and proprietary information intended for the private use of Quaker.  
© 2016 Quaker Window Products Co., INC. All rights reserved.  
Quaker reserves the right to change any/all designs without notice. Due to periodic re-certification requirements, result shown may vary.



**CASEMENT/CASEMENT - Shown With No Nailing Fins**



Our products are tested to the standards of and certified by some of the foremost organizations in the fenestration industry.

